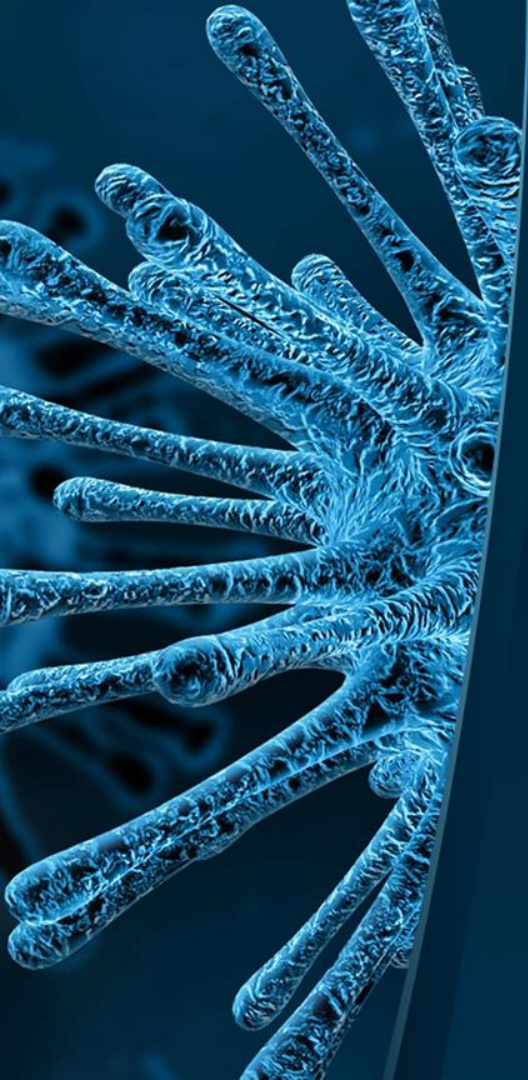


[Click to edit Master title style](#)

A microscopic image showing a cluster of elongated, branching biological structures, possibly cilia or flagella, rendered in a blue-tinted color. The structures are dense and radiate from a central point.

Slide Title

- Make Effective Presentations
- Using Awesome Backgrounds
- Engage your Audience
- Capture Audience Attention



Slide Title

- Make Effective Presentations
- Using Awesome Backgrounds
- Engage your Audience
- Capture Audience Attention

A microscopic image showing a dense network of blue, branching, and fibrous structures, likely representing biological tissue or a complex material. The structures are illuminated from the side, creating a strong contrast and highlighting their intricate, interconnected nature.

Slide Title

Product A

- Feature 1
- Feature 2
- Feature 3

Product B

- Feature 1
- Feature 2
- Feature 3

